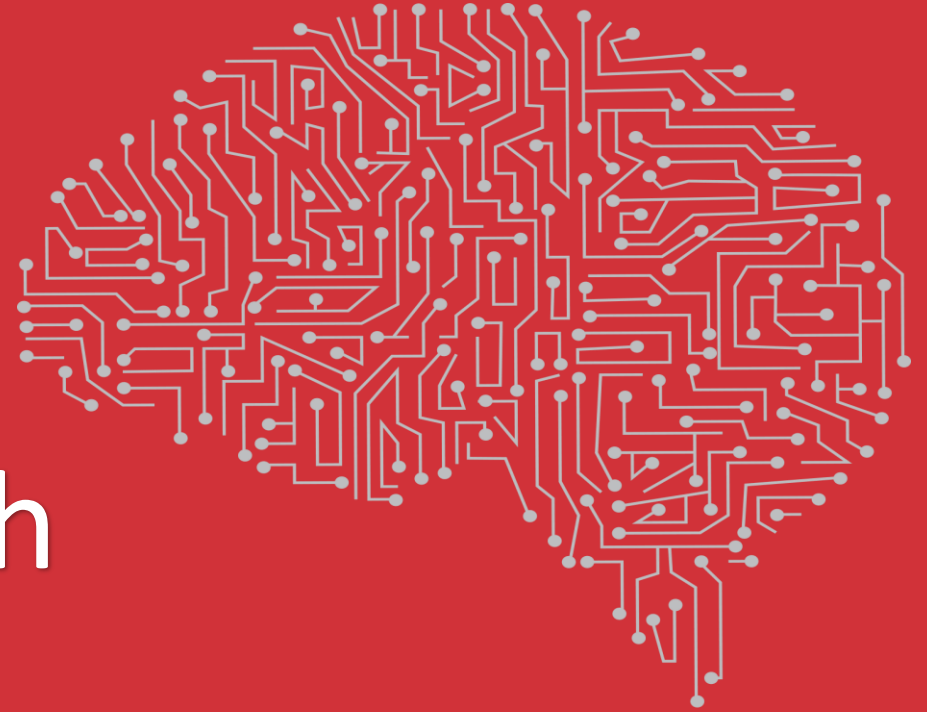


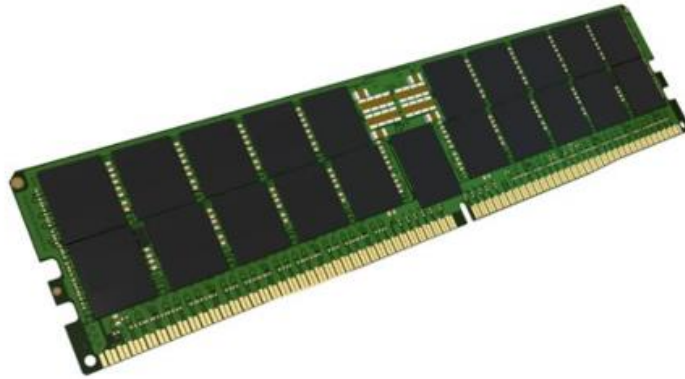
# Novinky v komponentách

2022



Lukáš Vach

# DDR5



## Form Factors

288-pin DIMM

260-pin SODIMM

## Performance (in MT/s)

3200 / 3600 / 4000 / 4400 / **4800**

**5200 / 5600 / 6000 / 6400**

## Power

1.1 V

12V for Hybrid DIMM (3-pins)

## DRAM Densities/DIMM Capacities

8Gb, **16Gb** (x4, x8, x16)

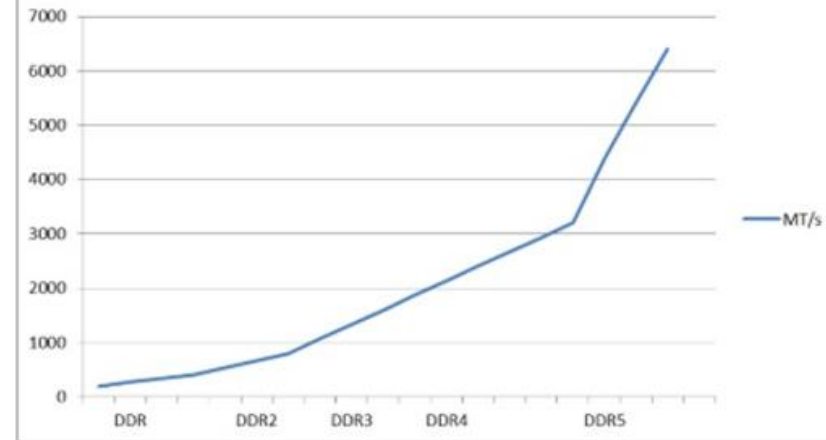
## New Features

8n / 16n Prefetch

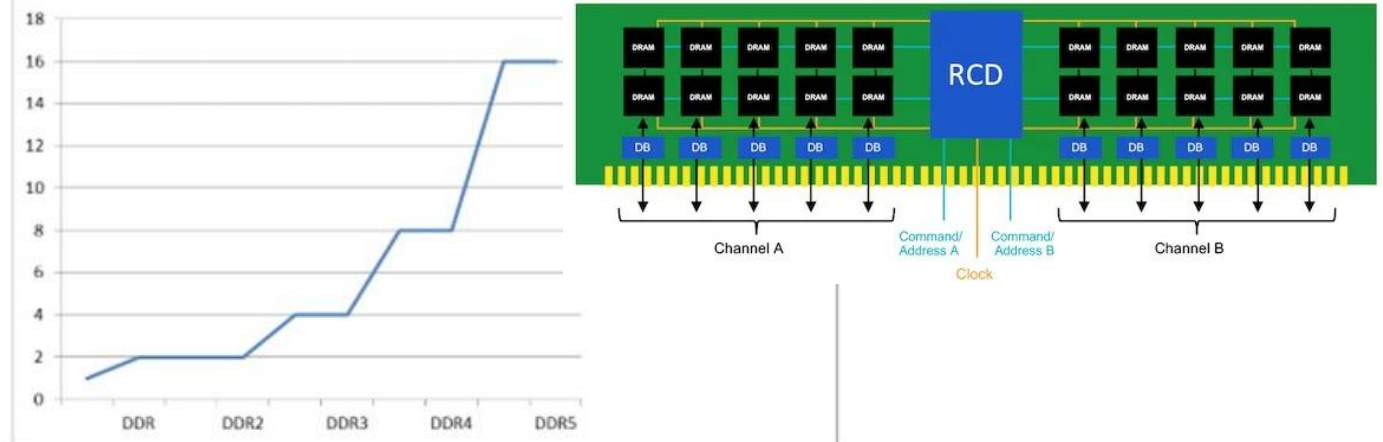
PMIC (Power Management) on module

Two 40-bit channels per DIMM (32-bit + ECC), doubles number of system channels featured by chipset

### Memory Interface Improvement



### Memory Capacity Improvement





**Architecture For The Modern  
Data Centers**



**Lenovo™**

**Servers**

The heart of the data center

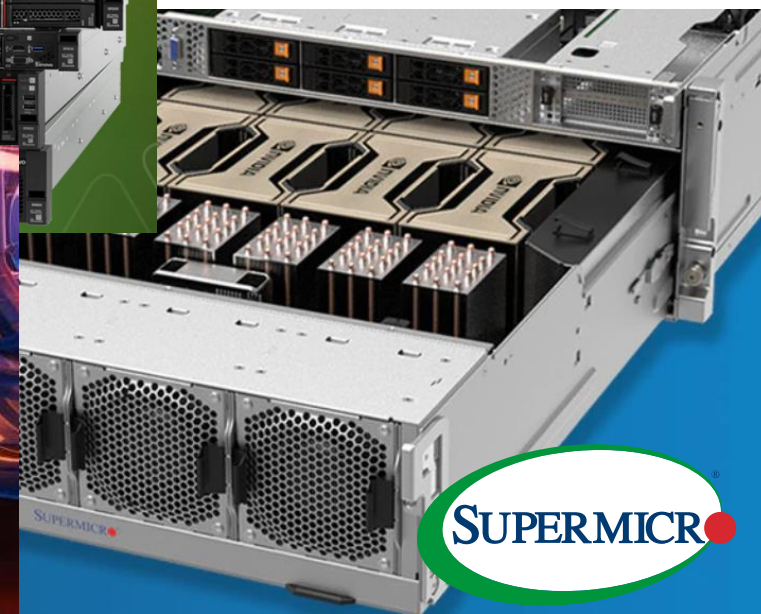
Drive your business forward with a server that matches your needs. Reduce costs and complexity by investing in a system that handles today's workload and expands to accommodate future growth.

**Solution Brief**

Enterprise, Cloud and Analytics, Small Business and Edge Computing

**intel®**

**Intel® Server System M50CYP Family**  
Featuring 3rd Gen Intel® Xeon® Scalable Processors



**SUPERMICR®**



Děkuji za pozornost

